

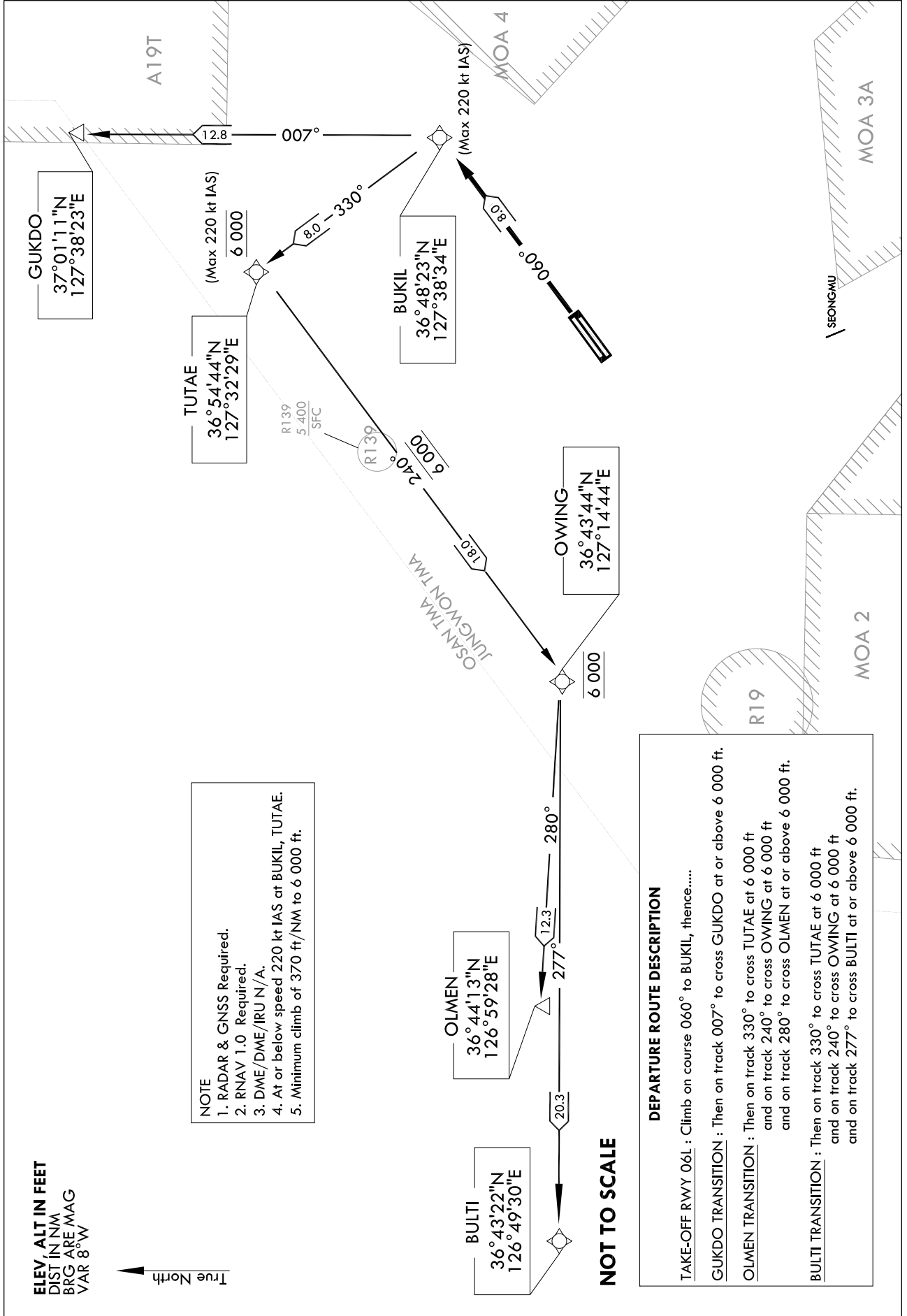
STANDARD DEPARTURE CHART
INSTRUMENT (SID) - ICAO

TRANSITION ALT 14 000
TRANSITION LVL FL 140

JUNGWON DEP 129.65
CHEONGJU TWR 118.7 126.2

CHEONGJU/Cheongju INTL(RKTU)
RWY 06L
RNAV(GNSS) BUKIL 2

Note : Departure under U.S. TERPS.



Change : Page control.

CHEONGJU/Cheongju INTL(RKTU)
RWY 06L
RNAV BUKIL 2

AERONAUTICAL DATA TABULATION

Standard Instrument Departure Procedure Coding Tables

RNAV BUKIL 2 - GUKDO Transition

Serial Number	Path Descriptor	Waypoint Identifier	Fly-over	Course/Track °M(°T)	Distance (NM)	Turn direction	Altitude (ft)	Speed (kt)	Coordinates	VPA/TCH	Navigation specification	Remarks
001	CF	BUKIL	-	060(052.41)	8.0	-	-	-220	36°48'23.2"N 127°38'33.7"E	-	RNAV 1	CG 370 ft/NM to 6 000 ft
002	TF	GUKDO	-	007(359.35)	12.78	-	+6 000	-	37°01'10.9"N 127°38'22.9"E	-	RNAV 1	CG 370 ft/NM to 6 000 ft

RNAV BUKIL 2 - OLMEN Transition

Serial Number	Path Descriptor	Waypoint Identifier	Fly-over	Course/Track °M(°T)	Distance (NM)	Turn direction	Altitude (ft)	Speed (kt)	Coordinates	VPA/TCH	Navigation specification	Remarks
001	CF	BUKIL	-	060(052.41)	8.0	-	-	-220	36°48'23.2"N 127°38'33.7"E	-	RNAV 1	CG 370 ft/NM to 6 000 ft
002	TF	TUTAE	-	330(322.50)	8.0	-	@6 000	-220	36°54'44.4"N 127°32'29.4"E	-	RNAV 1	CG 370 ft/NM to 6 000 ft
003	TF	OWING	-	240(232.44)	18.0	-	@6 000	-	36°43'43.8"N 127°14'44.4"E	-	RNAV 1	-
004	TF	OLMEN	-	280(272.37)	12.29	-	+6 000	-	36°44'13.4"N 126°59'27.6"E	-	RNAV 1	-

RNAV BUKIL 2 - BULTI Transition

Serial Number	Path Descriptor	Waypoint Identifier	Fly-over	Course/Track °M(°T)	Distance (NM)	Turn direction	Altitude (ft)	Speed (kt)	Coordinates	VPA/TCH	Navigation specification	Remarks
001	CF	BUKIL	-	060(052.41)	8.0	-	-	-220	36°48'23.2"N 127°38'33.7"E	-	RNAV 1	CG 370 ft/NM to 6 000 ft
002	TF	TUTAE	-	330(322.50)	8.0	-	@6 000	-220	36°54'44.4"N 127°32'29.4"E	-	RNAV 1	CG 370 ft/NM to 6 000 ft
003	TF	OWING	-	240(232.44)	18.0	-	@6 000	-	36°43'43.8"N 127°14'44.4"E	-	RNAV 1	-
004	TF	BULTI	-	277(269.11)	20.3	-	+6 000	-	36°43'22.3"N 126°49'29.7"E	-	RNAV 1	-

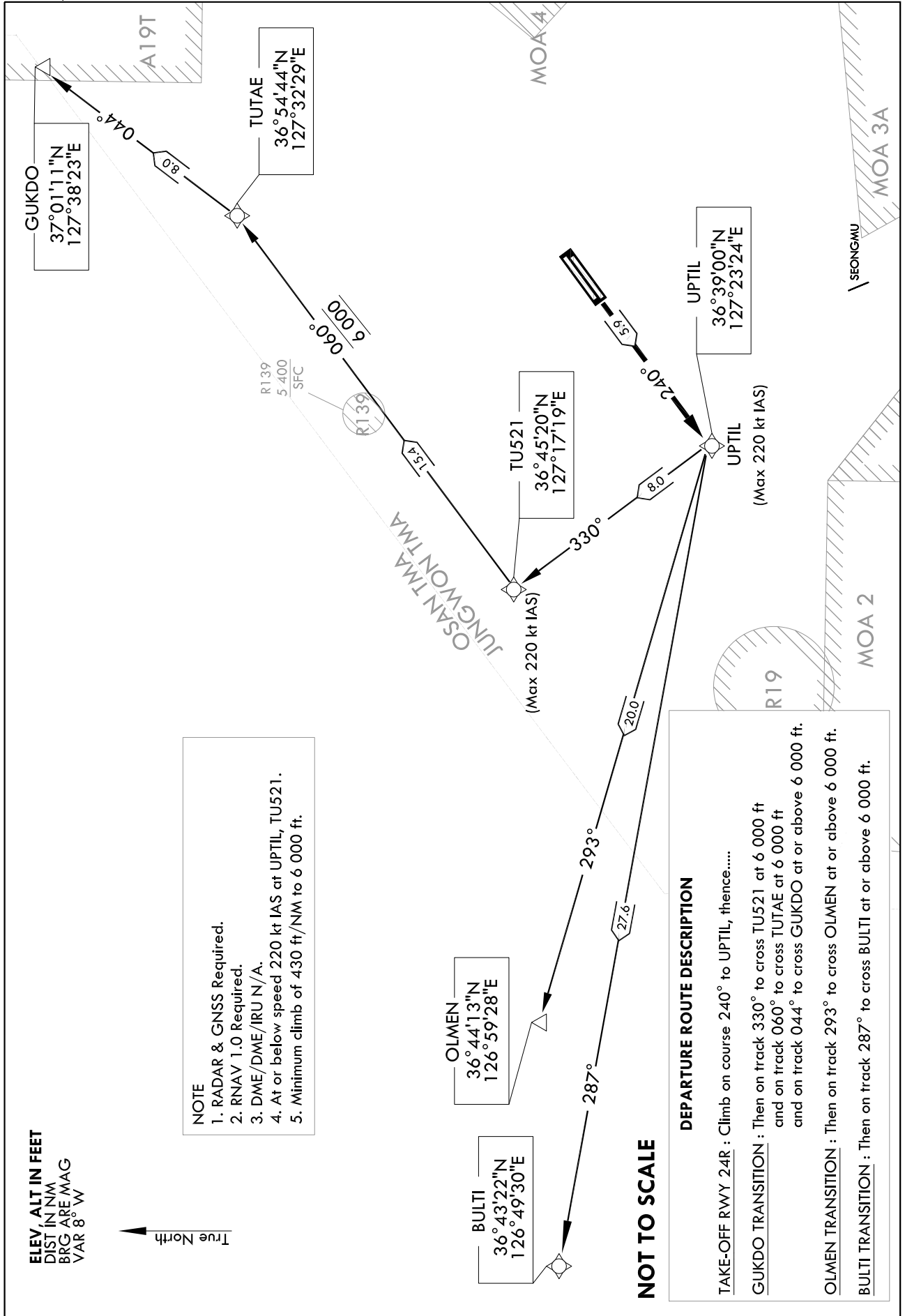
STANDARD DEPARTURE CHART
INSTRUMENT (SID) - ICAO

TRANSITION ALT 14 000
TRANSITION LVL FL 140

JUNGWON DEP 129.65
CHEONGJU TWR 118.7 126.2

CHEONGJU/Cheongju INTL(RKTU)
RWY 24R
RNAV(GNSS) UPTIL 1

Note : Departure under U.S. TERPS.



Change : Page control.

CHEONGJU/Cheongju INTL(RKTU)
RWY 24R
RNAV UPTIL 1

AERONAUTICAL DATA TABULATION

Standard Instrument Departure Procedure Coding Tables

RNAV UPTIL 1 - GUKDO Transition

Serial Number	Path Descriptor	Waypoint Identifier	Fly-over	Course/Track °M(°T)	Distance (NM)	Turn direction	Altitude (ft)	Speed (kt)	Coordinates	VPA/TCH	Navigation specification	Remarks
001	CF	UPTIL	-	240(232.4)	5.9	-	-	-220	36°38'59.7"N 127°23'23.8"E	-	RNAV 1	CG 430 ft/NM to 6 000 ft
002	TF	TU521	-	330(322.34)	8.0	-	@6 000	-220	36°45'19.8"N 127°17'19.1"E	-	RNAV 1	CG 430 ft/NM to 6 000 ft
003	TF	TUTAE	-	060(052.27)	15.38	-	@6 000	-	36°54'44.4"N 127°32'29.4"E	-	RNAV 1	-
004	TF	GUKDO	-	044(036.24)	7.98	-	+6 000	-	37°01'10.9"N 127°38'22.9"E	-	RNAV 1	-

RNAV UPTIL 1 - OLMEN Transition

Serial Number	Path Descriptor	Waypoint Identifier	Fly-over	Course/Track °M(°T)	Distance (NM)	Turn direction	Altitude (ft)	Speed (kt)	Coordinates	VPA/TCH	Navigation specification	Remarks
001	CF	UPTIL	-	240(232.4)	5.9	-	-	-220	36°38'59.7"N 127°23'23.8"E	-	RNAV 1	CG 430 ft/NM to 6 000 ft
002	TF	OLMEN	-	293(285.29)	19.95	-	+6 000	-	36°44'13.4"N 126°59'27.6"E	-	RNAV 1	CG 430 ft/NM to 6 000 ft

RNAV UPTIL 1 - BULTI Transition

Serial Number	Path Descriptor	Waypoint Identifier	Fly-over	Course/Track °M(°T)	Distance (NM)	Turn direction	Altitude (ft)	Speed (kt)	Coordinates	VPA/TCH	Navigation specification	Remarks
001	CF	UPTIL	-	240(232.4)	5.9	-	-	-220	36°38'59.7"N 127°23'23.8"E	-	RNAV 1	CG 430 ft/NM to 6 000 ft
002	TF	BULTI	-	287(279.28)	27.62	-	+6 000	-	36°43'22.3"N 126°49'29.7"E	-	RNAV 1	CG 430 ft/NM to 6 000 ft

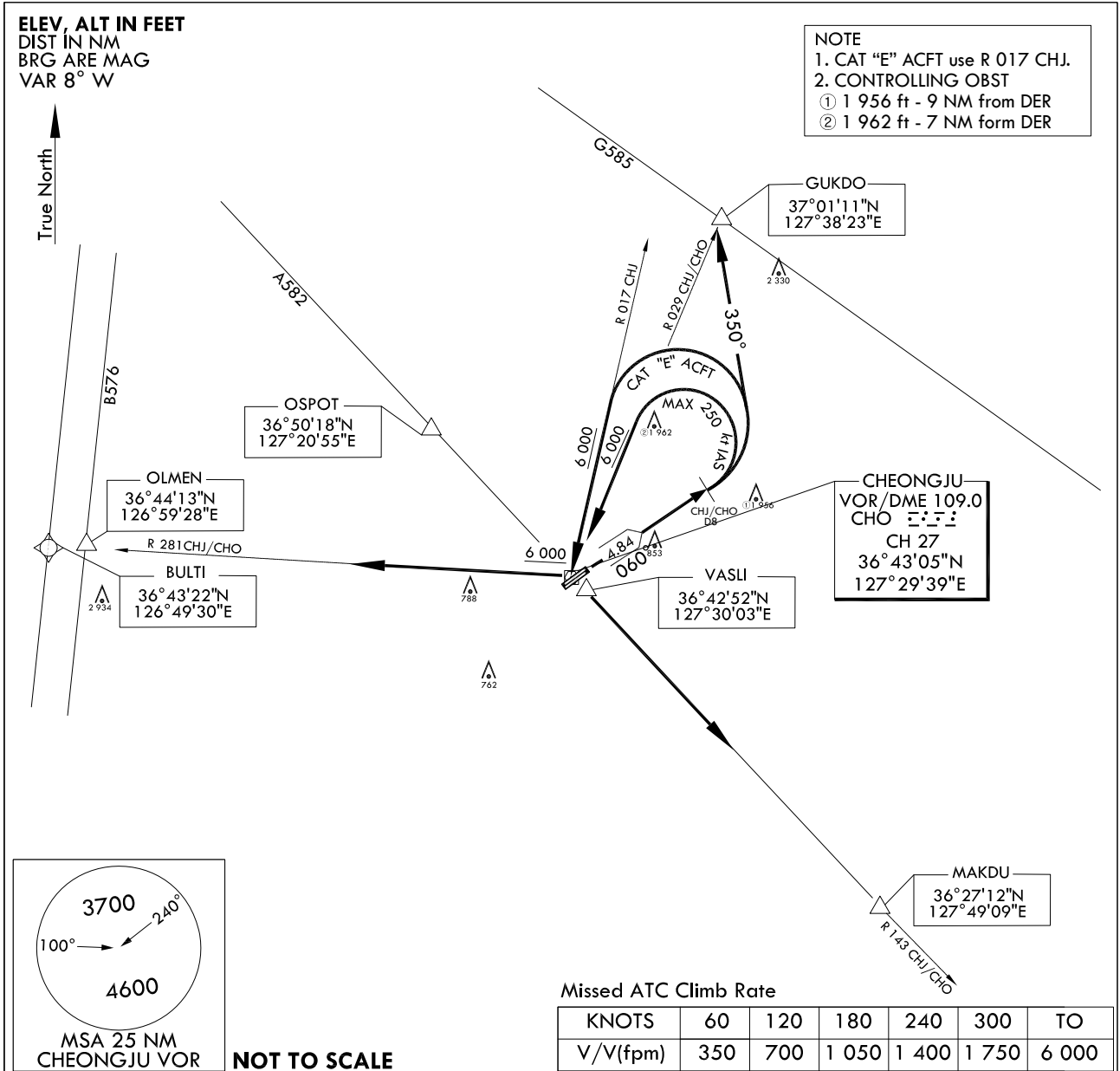
**STANDARD DEPARTURE CHART
INSTRUMENT (SID) - ICAO**

TRANSITION ALT 14 000
TRANSITION LVL FL 140

JUNGWON DEP 129.65 239.4
CHEONGJU TWR 118.7 126.2

**CHEONGJU/Cheongju INTL(RKTU)
RWY 06L/R
CHEONGJU 7**

Note : Departure under U.S TERPS.



DEPARTURE PROCEDURE DESCRIPTION

CHEONGJU 7 DEPARTURE

RWY 06L/R : Climb HDG 060° to CHJ/CHO 8 DME, then left turn thence.....

GUKDO transition

: Turn left HDG 350° for interception R 029 CHJ/CHO, then track outbound R 029 CHJ/CHO to GUKDO maintain 8 000 ft or assigned altitude by ATC.

MAKDU transition

: Turn left for interception R 017 CHJ/R 029 CHO to CHJ/CHO and at or above 6 000 ft, then track outbound R 143 CHJ/CHO to MAKDU maintain 8 000 ft or assigned altitude by ATC.

OLMEN/BULTI transition

: Turn left for interception R 017 CHJ/R 029 CHO to CHJ/CHO and at or above 6 000 ft, then track outbound R 281 CHJ/CHO to OLMEN/BULTI maintain 7 000 ft or assigned altitude by ATC.

Change : Withdrawal of TACAN(CHJ).

INTENTIONALLY

LEFT

BLANK

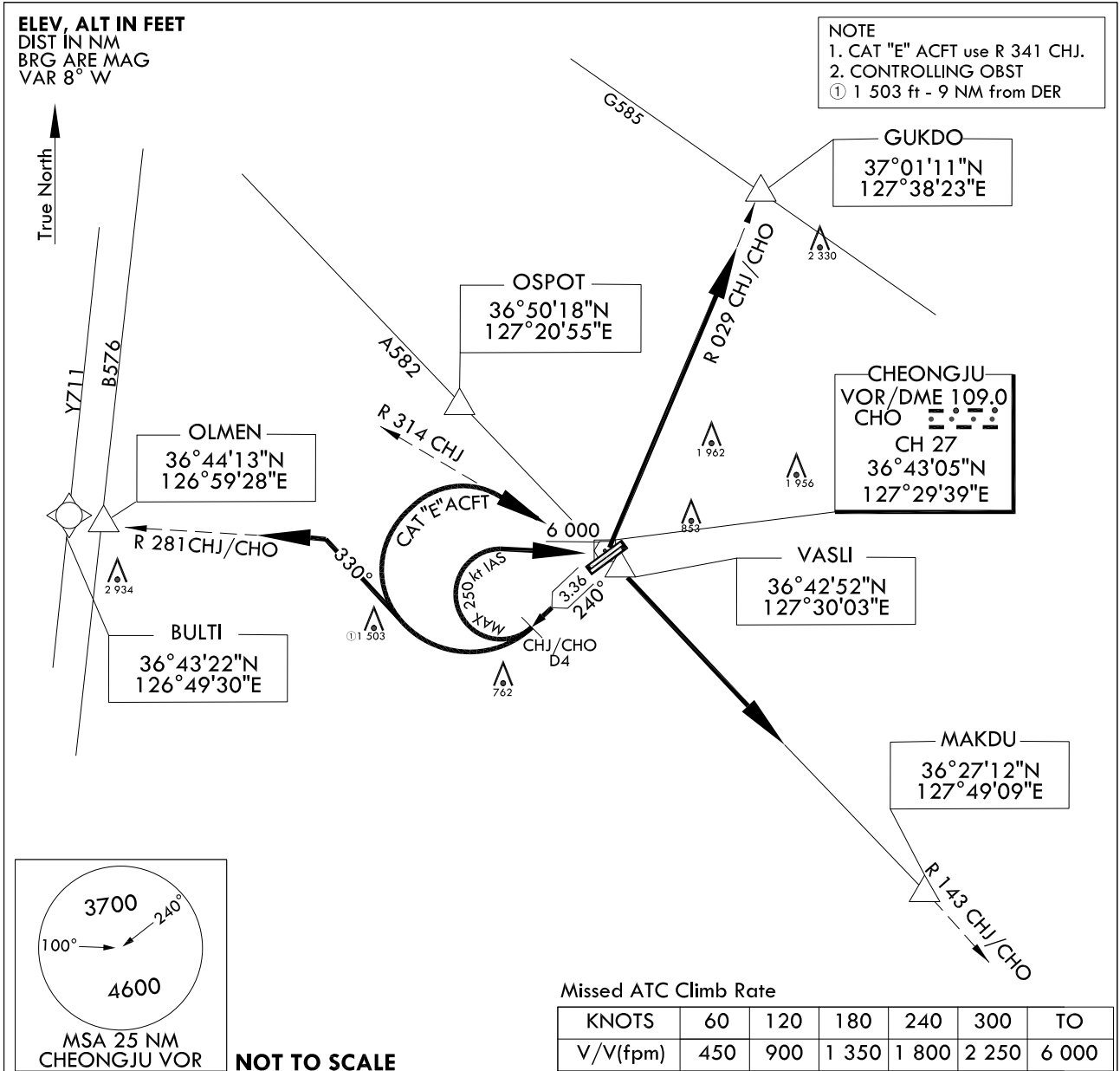
STANDARD DEPARTURE CHART
INSTRUMENT (SID) - ICAO

TRANSITION ALT 14 000
TRANSITION LVL FL 140

JUNGWON DEP 129.65 239.4
CHEONGJU TWR 118.7 126.2

CHEONGJU/Cheongju INTL(RKTU)
RWY 24L/R
CHEONGJU 8

Note : Departure under U.S TERPS.



DEPARTURE PROCEDURE DESCRIPTION

CHEONGJU 8 DEPARTURE

RWY 24L/R : Climb HDG 240° to CHJ/CHO 4 DME, then right turn for the following routes.

- GUKDO transition** : Turn right for interception R 341 CHJ/R 281 CHO to CHJ/CHO and at or above 6 000 ft, then track outbound R 029 CHJ/CHO to GUKDO maintain 8 000 ft or assigned altitude by ATC.
- MAKDU transition** : Turn right for interception R 314 CHJ/R 281 CHO to CHJ/CHO and at or above 6 000 ft, then track outbound R 143 CHJ/CHO to MAKDU maintain 8 000 ft or assigned altitude by ATC.
- OLMEN/BULTI transition** : Turn right HDG 330° for interception R 281 CHJ/CHO, then track outbound R 281 CHJ/CHO to OLMEN/BULTI maintain 8 000 ft or assigned altitude by ATC.

Change : Withdrawal of TACAN(CHJ).

INTENTIONALLY

LEFT

BLANK

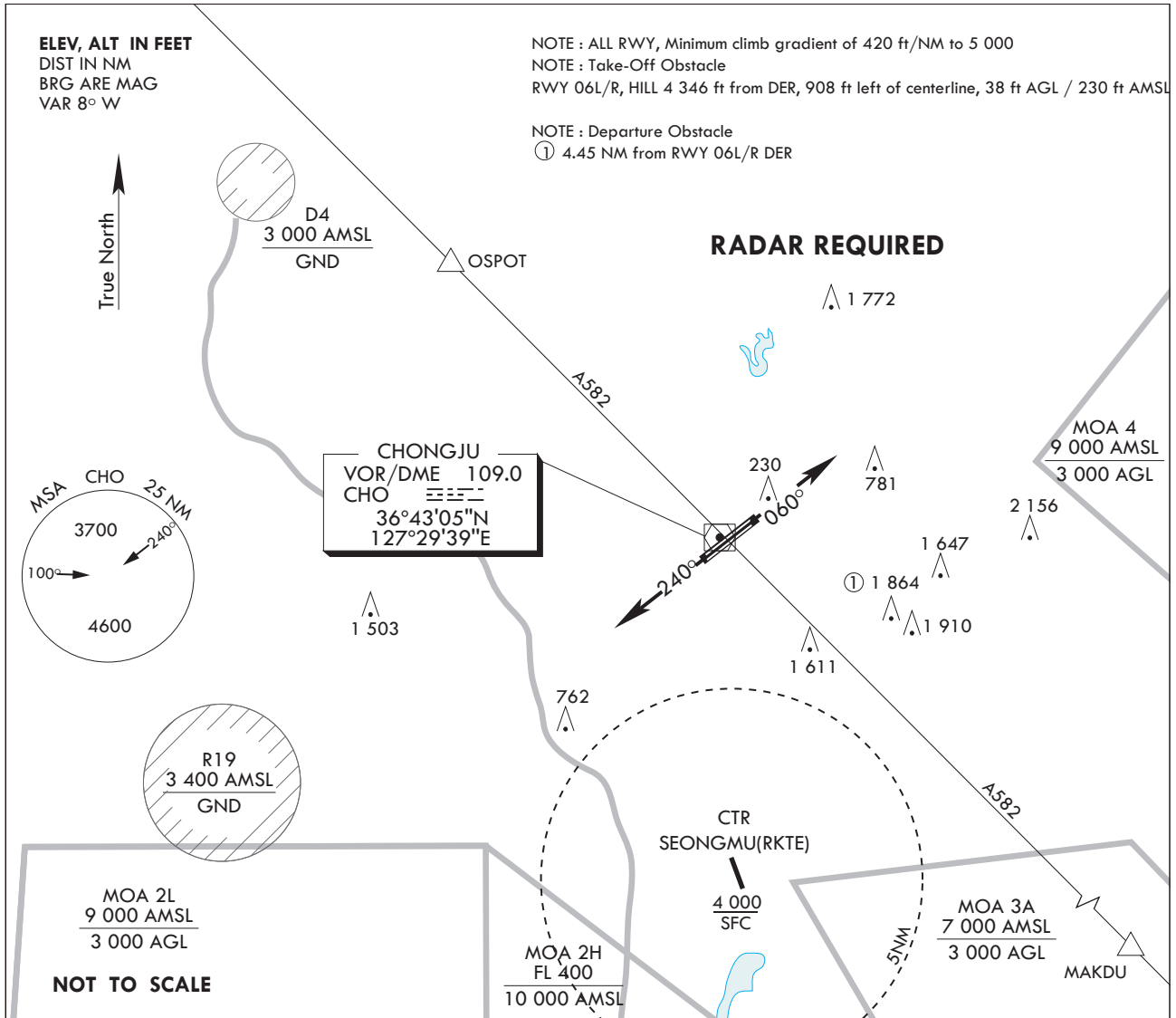
STANDARD DEPARTURE CHART -
INSTRUMENT (SID)

TRANSITION ALT 14 000
TRANSITION LVL FL 140

JUNGWON DEP 129.65 292.9
CHEONGJU TWR 118.7 249.6
126.2 236.6

CHEONGJU/Cheongju INTL
RWY 06L/24R
CHEONGJU 1D

Note : Departure under U.S. TERPS.



DEPARTURE PROCEDURE DESCRIPTION

NOTE : ALL RWY, Minimum climb gradient of 420 ft/NM to 5 000

TAKEOFF RWY 06R/L : Climb HDG 060°, Thence.....

TAKEOFF RWY 24R/L : Climb HDG 240°, Thence.....

.....Expect radar vectors to intercept filed Enroute fix or Navaid.
Maintain 6 000 or assigned altitude(flight level).
Expect filed altitude/flight level within 10minutes after departure.

LOST COMMUNICATIONS : If radio contact is not established with departure control
prior to reaching 5 000, Continue climbing and proceed filed route
and altitude.

Change : Amended coordinate format.

INTENTIONALLY

LEFT

BLANK